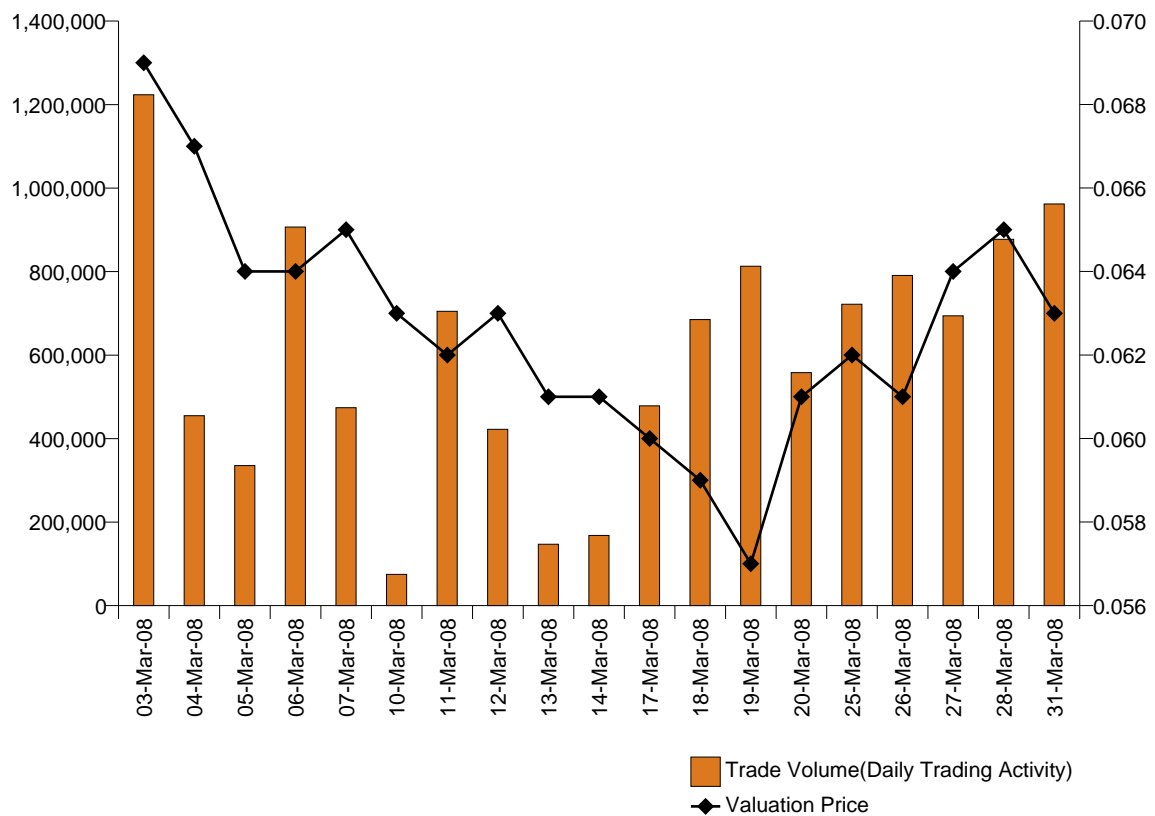


Activity Report

INTEC LTD

March 2008

Valuation Price over Trade Volume



Published by the Australian Stock Exchange Limited ABN 98 008 624 691
 Information Services, Exchange Centre, Level 5, 20 Bridge Street, Sydney NSW 2000
 ASX Customer Service: 1300 300 279

Internet <http://www.asx.com.au>

Security

Activity Report

ASX Market Information

(Excluding Fixed Interest Securities)

	March	February
Total Number of Trades for Month	7,915,713	7,949,400
Market Trade Volume for Month	31,618,907,279	33,478,581,315
Market Trade Value for Month	133,782,547,950	135,970,668,651
Number of ASX Business Days	19	21
Daily Average Market Trade Volume	1,664,153,015	1,594,218,158
Daily Average Market Trade Value	7,041,186,734	6,474,793,745

Listed Company Information

Company INTEC LTD
ASX Code INL

Opening Price (\$)	0.073	03-Mar-2008
Highest Price (\$)	0.073	03-Mar-2008
Lowest Price (\$)	0.057	19-Mar-2008
Closing Price (\$)	0.063	31-Mar-2008

Price Movement (%)	-15.873
Reconstruction Notes:	

Total Number of Trades	301
Total Trade Volume (Number of Shares)	11,492,586
Average Daily Volume (Number of Shares)	604,873
Highest Volume	1,223,545
Lowest Volume	75,000
Total Trade Value for Month (\$)	720,172
Average Daily Trade Value for Month (\$)	37,904
Percentage of Quoted Shares Traded (%)	2.05

No part of this material may be copied, reproduced, stored in a retrieval system or any other electronic medium, nor, may it be transmitted in any form or by any means whether electronic, mechanical or otherwise without prior written approval of the Manager, Market Information, Australian Stock Exchange Limited. No responsibility is accepted for any inaccuracies in the matter published.

Security

Activity Report

Company INTEC LTD

ASX Code INL

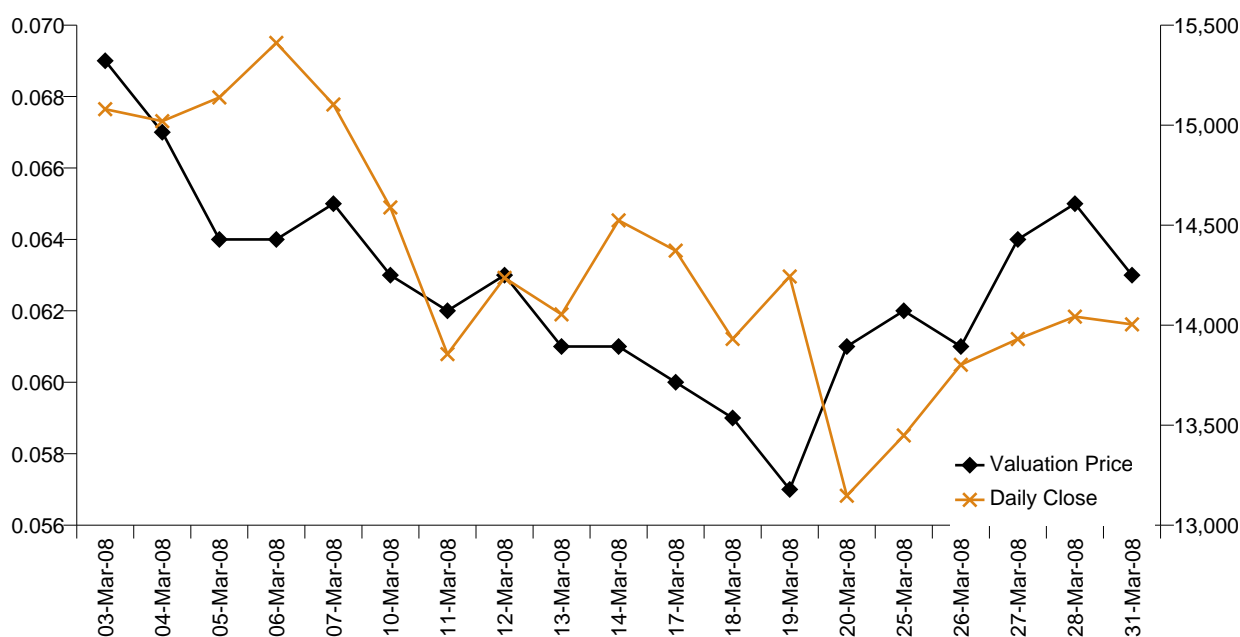
ASX Index Data

Index Name	Index Code	Open	Close	Percent Change
ALL ORDINARIES	XAO	5,674.69	5,409.70	-4.67
S&P/ASX 200	XJO	5,572.09	5,355.69	-3.88

GICS Sector Index Data

Index Name	Index Code	Open	Close	Percent Change
S&P/ASX 200 Materials (Sector)	XMJ	#####	14,004.12	-8.82

Valuation Price versus GICS Sector Index Daily Close



No part of this material may be copied, reproduced, stored in a retrieval system or any other electronic medium, nor, may it be transmitted in any form or by any means whether electronic, mechanical or otherwise without prior written approval of the Manager, Market Information, Australian Stock Exchange Limited. No responsibility is accepted for any inaccuracies in the matter published.

Security

Activity Report

Daily Trading Activity

Company INTEC LTD
ASX Code INL

Trade Date	Trade Count	Trade Value	High	Price (\$) Low	Last
03-Mar-08	23	85,778	0.073	0.069	0.069
04-Mar-08	14	30,815	0.068	0.067	0.067
05-Mar-08	9	21,940	0.067	0.064	0.064
06-Mar-08	29	57,596	0.068	0.062	0.064
07-Mar-08	12	30,280	0.065	0.063	0.065
10-Mar-08	4	4,725	0.063	0.063	0.063
11-Mar-08	21	42,310	0.062	0.059	0.062
12-Mar-08	10	26,875	0.065	0.061	0.063
13-Mar-08	7	9,102	0.063	0.061	0.061
14-Mar-08	8	10,313	0.062	0.061	0.061
17-Mar-08	15	28,605	0.060	0.059	0.060
18-Mar-08	17	41,450	0.061	0.059	0.059
19-Mar-08	20	47,953	0.061	0.057	0.057
20-Mar-08	10	32,138	0.061	0.057	0.061
25-Mar-08	26	43,281	0.062	0.059	0.062
26-Mar-08	19	47,695	0.064	0.059	0.059
27-Mar-08	13	42,198	0.064	0.060	0.064
28-Mar-08	17	55,707	0.065	0.061	0.065
31-Mar-08	27	61,411	0.065	0.063	0.063

No part of this material may be copied, reproduced, stored in a retrieval system or any other electronic medium, nor, may it be transmitted in any form or by any means whether electronic, mechanical or otherwise without prior written approval of the Manager, Market Information, Australian Stock Exchange Limited. No responsibility is accepted for any inaccuracies in the matter published.

Security

Activity Report

Selected Trade Data - Special Trades

Company INTEC LTD
ASX Code INL

Trade Date	Trade Count	Trade Volume	Trade Value (\$)	Average Price (\$)
------------	-------------	--------------	------------------	--------------------

No part of this material may be copied, reproduced, stored in a retrieval system or any other electronic medium, nor, may it be transmitted in any form or by any means whether electronic, mechanical or otherwise without prior written approval of the Manager, Market Information, Australian Stock Exchange Limited. No responsibility is accepted for any inaccuracies in the matter published.

Security

Activity Report

Selected Trade Data - Short Trades

Company INTEC LTD
ASX Code INL

Trade Date	Trade Count	Trade Volume	Trade Value (\$)	Average Price (\$)
------------	-------------	--------------	------------------	--------------------

No part of this material may be copied, reproduced, stored in a retrieval system or any other electronic medium, nor, may it be transmitted in any form or by any means whether electronic, mechanical or otherwise without prior written approval of the Manager, Market Information, Australian Stock Exchange Limited. No responsibility is accepted for any inaccuracies in the matter published.

Security

Activity Report

Fifteen Most Active Brokers by Volume, by Value

Company INTEC LTD
ASX Code INL

Broking Firm	Buy Volume	Sell Volume	Total Volume
Commonwealth Securities Limited	4,064,603	2,156,087	6,220,690
UBS Securities Australia Ltd	0	2,915,886	2,915,886
ETRADE Australia Securities Limited	1,460,710	1,231,775	2,692,485
JDV Limited	698,530	500,230	1,198,760
Macquarie Equities Limited	105,728	1,048,595	1,154,323
Westpac Securities Limited	555,000	516,955	1,071,955
Veritas Securities Limited	1,000,000	0	1,000,000
Australian Investment Exchange Limited	330,000	445,000	775,000
Macquarie Capital Securities (Australia) Limited	360,000	410,375	770,375
Credit Suisse Equities (Australia) Limited	50,000	693,545	743,545
Shadforths Limited	652,873	0	652,873
SHAW Stockbroking Limited	477,660	100,000	577,660
State One Stockbroking Limited	550,000	0	550,000
IMC Pacific Pty Ltd	272,082	272,082	544,164
Southern Cross Equities Limited	0	436,457	436,457

Broking Firm	Buy Value	Sell Value	Total Value
Commonwealth Securities Limited	256,325	133,623	389,948
UBS Securities Australia Ltd	0	175,833	175,833
ETRADE Australia Securities Limited	92,103	78,885	170,988
JDV Limited	43,705	31,770	75,475
Macquarie Equities Limited	7,191	65,764	72,955
Westpac Securities Limited	34,718	32,993	67,711
Veritas Securities Limited	61,470	0	61,470
Credit Suisse Equities (Australia) Limited	3,350	48,548	51,898
Australian Investment Exchange Limited	20,195	29,886	50,081
Macquarie Capital Securities (Australia) Limited	21,745	25,085	46,830
Shadforths Limited	41,048	0	41,048
SHAW Stockbroking Limited	29,733	6,169	35,902
State One Stockbroking Limited	34,750	0	34,750
IMC Pacific Pty Ltd	16,528	17,237	33,765
Southern Cross Equities Limited	0	27,497	27,497

No part of this material may be copied, reproduced, stored in a retrieval system or any other electronic medium, nor, may it be transmitted in any form or by any means whether electronic, mechanical or otherwise without prior written approval of the Manager, Market Information, Australian Stock Exchange Limited. No responsibility is accepted for any inaccuracies in the matter published.